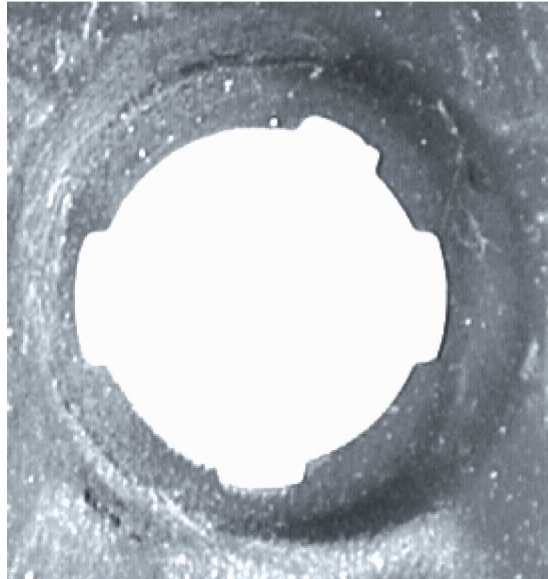
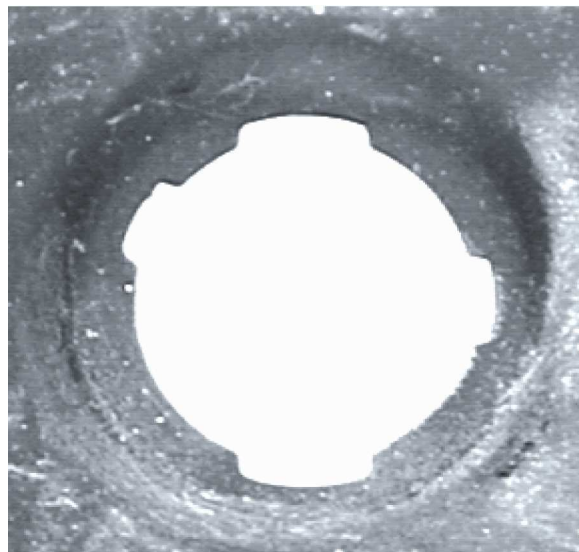


1967 Camaro Trunk Lock Hole

Late production 1967 Camaros and ALL 1967 Camaros with GM replacement or Reproduction tail pans installed MUST use 1968 trunk lock assemblies to avoid a sideways key. Please take a moment to compare the pictures below with your Camaro to insure you are ordering the correct assembly for your car. Also, there is no difference in the ignition lock assemblies.



Early 1967



**Late 1967 & 1968
GM replacement and reproduction**

